

MONTHLY MEMBERSHIP PROGRESS REPORT

LOCATION ARKANSAS

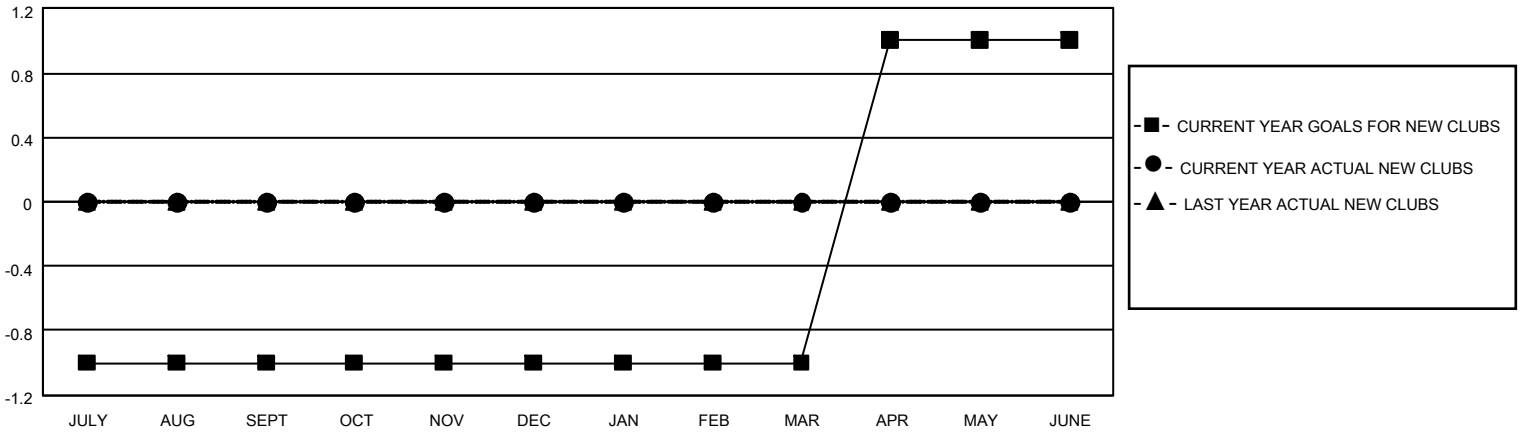
District 7 N

Results as of: 11/30/2020

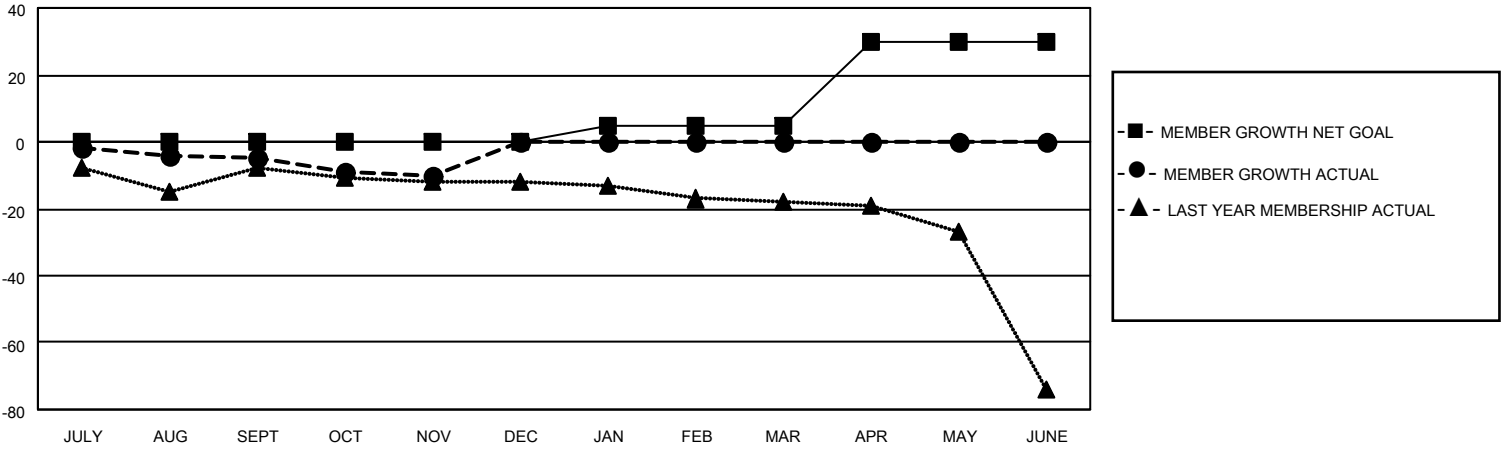
Clubs			
RESULTS FOR 2020-2021			
QUARTER	NEW CLUB GOAL	NEW CLUBS	DROPPED CLUBS
JULY/AUG/SEPT	(1)	0	0
OCT/NOV/DEC	0	0	0
JAN/FEB/MAR	0	0	0
APR/MAY/JUNE	2	0	0

Members			
RESULTS FOR 2020-2021			
QUARTER	MEMBER GROWTH NET GOAL	MEMBER GROWTH ACTUAL	DROPPED MEMBERS ACTUAL (including transfers)
JULY/AUG/SEPT	0	15	15
OCT/NOV/DEC	0	3	7
JAN/FEB/MAR	5	0	0
APR/MAY/JUNE	25	0	0

GOALS AND ACTUAL NEW CLUBS CUMULATIVE



GOALS AND ACTUAL MEMBERS CUMULATIVE



DROPPED CLUBS: 0	8 CLUBS OF 28 ADDED 1 OR MORE NEW MEMBERS	<u>GENDER DISTRIBUTION</u> MALE 352 (60.59%) FEMALE 229 (39.41%)
<u>DROPPED MEMBERS</u> DECEASED 3 CLUB CANCELLED 0 OTHER 19 <hr/> TOTAL 22	CLICK HERE FOR CUMULATIVE MEMBERSHIP DATA	TOTAL FAMILY UNIT MEMBERS 149 FAMILY MEMBERS PAYING HALF DUES 76